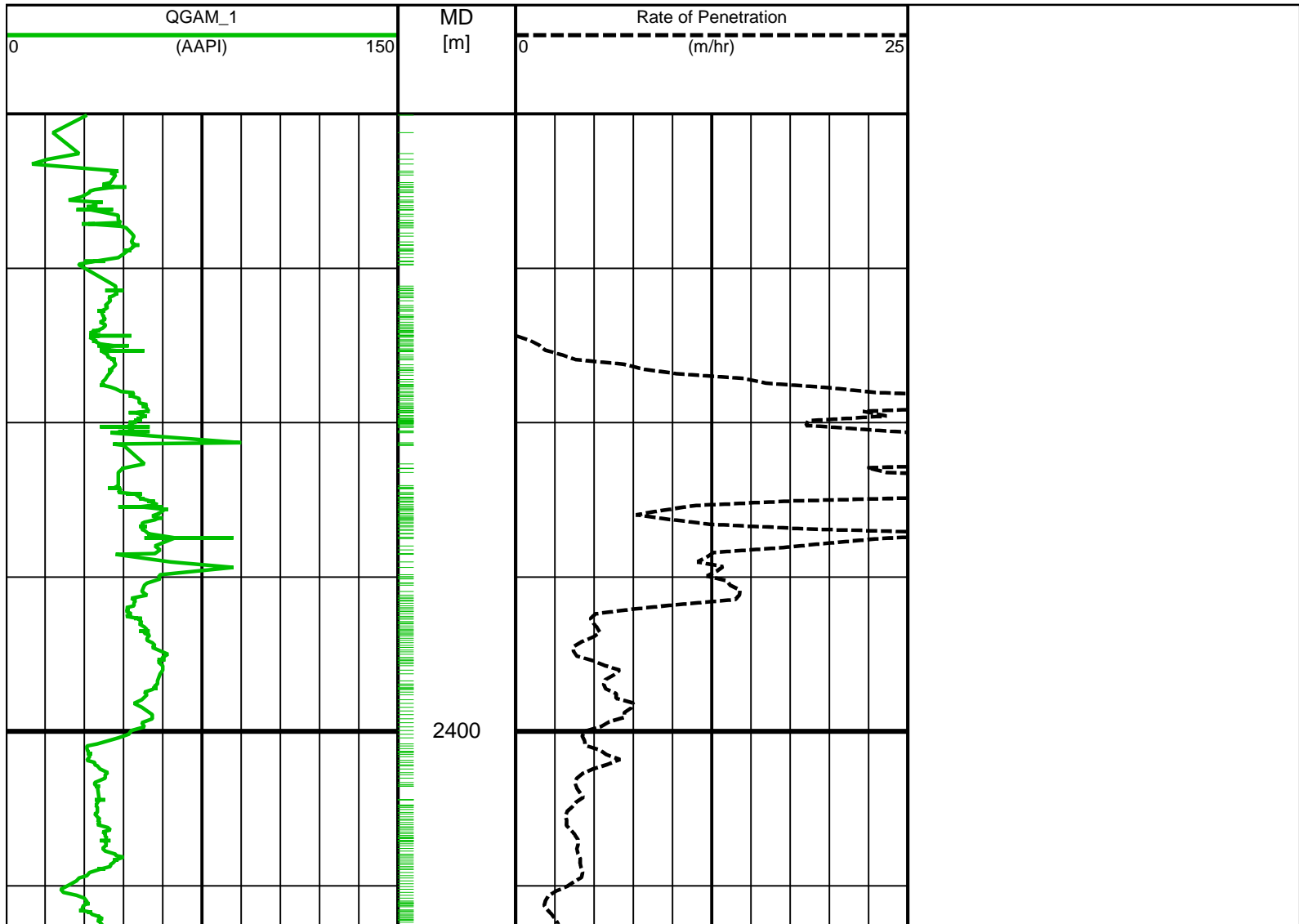
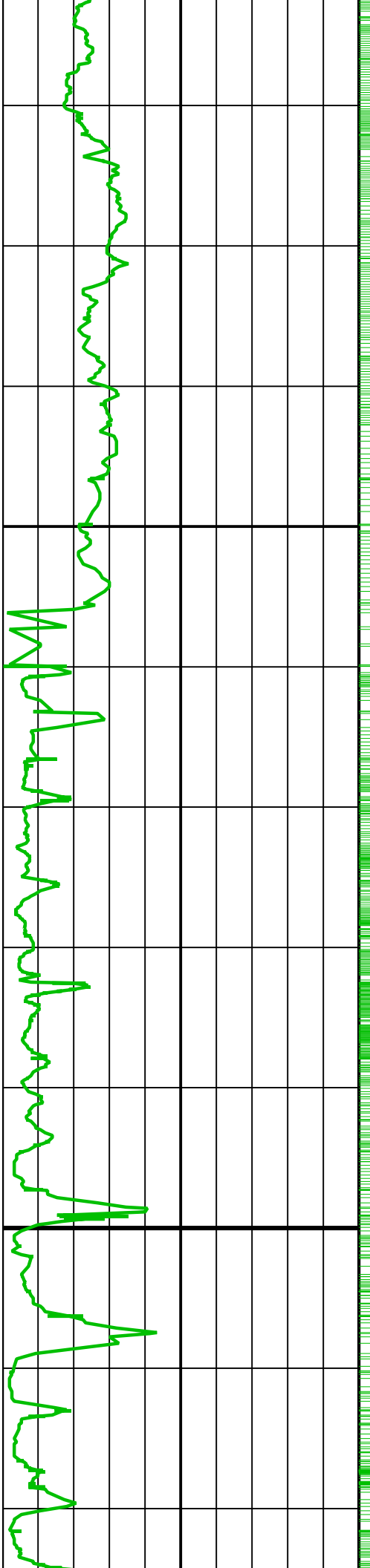




Run Number		01	02				
Bit Size	mm	155.60	155.60				
Bit Type		Mill	PDC				
Bit TFA	in^2	1.227	0.464				
Bit Start Depth	m	2389.1	2,393				
Bit End Depth	m	2393.2	2615.3				
Top Log Interval	m		2,393				
Bottom Log Interval	m		2601.4				
Begin Log Time	hh:mm		04:23				
Begin Log Date	DD-MMM-YY		18-Jun-15				
End Log Time	hh:mm						
End Log Date	DD-MMM-YY						
Drill or Wipe		Mill	Drill / Wipe				
Surface/Bit RPM	RPM	60 / 60	30 / 30				
Flow Rate	L/min	1000	1100				
Min Inc @ Depth	deg @ m	.00 @	26.29 @ 2528				
Max Inc @ Depth	deg @ m	2390.00 @ 33	31.91 @ 2411				

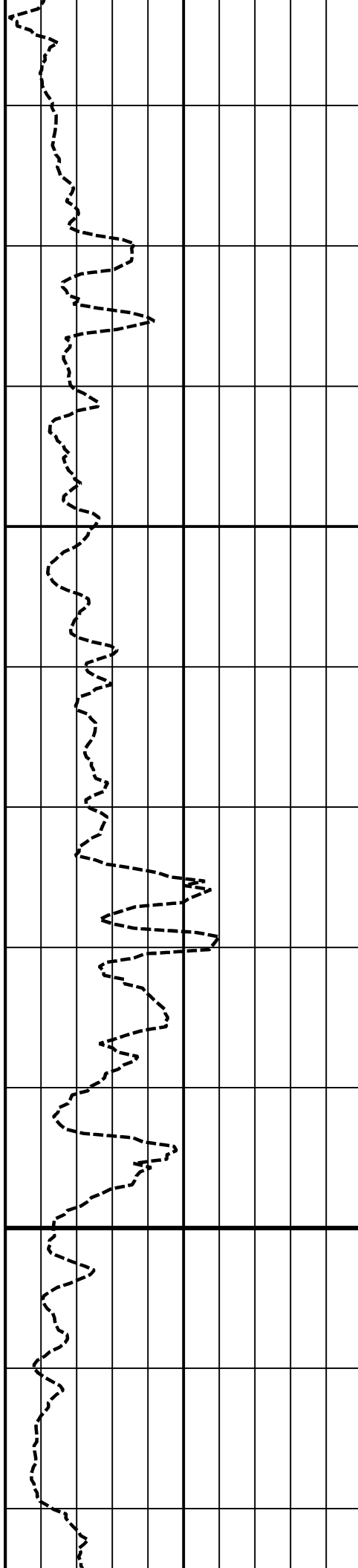
MUD DATA							
Fluid Type		Water	Water				
Mud Weight	sg	1.10	1.14				
PV / YP	cp / YP	15 / 21	16 / 34				
Solids / Sands	%	.0 / .00	4.5 / 0.5				
ph / Fluid Loss	ph / ml/30min						
Oil:Water Ratio	% Vol	.0 : .0	.0 : 95.5				
Client Representative		Bas Kaldenbach	Bas Kaldenbach / Art de Vetter				
Weatherford Engineer		Axel Stolte	Uwe Ritscher				

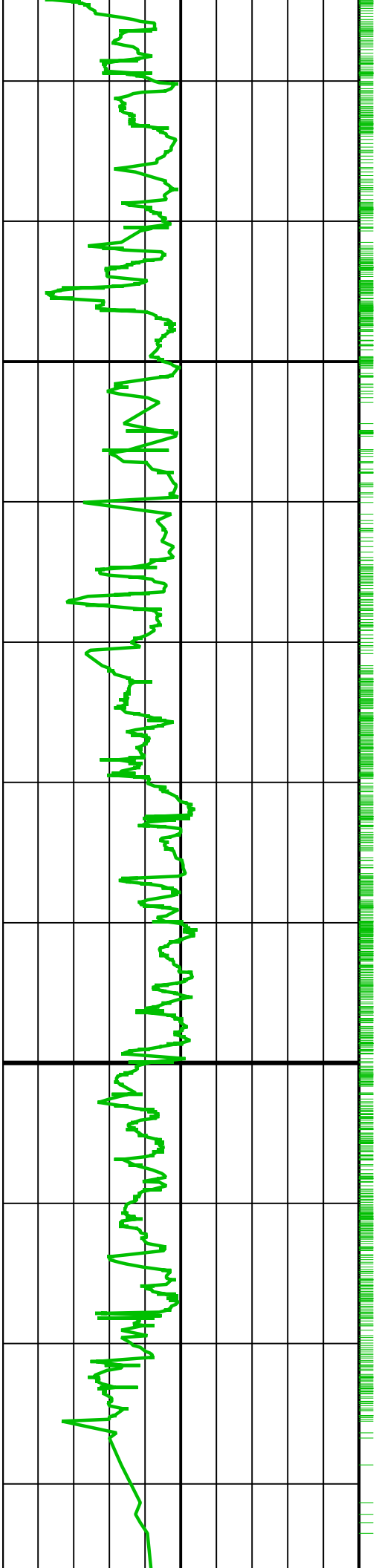




2425

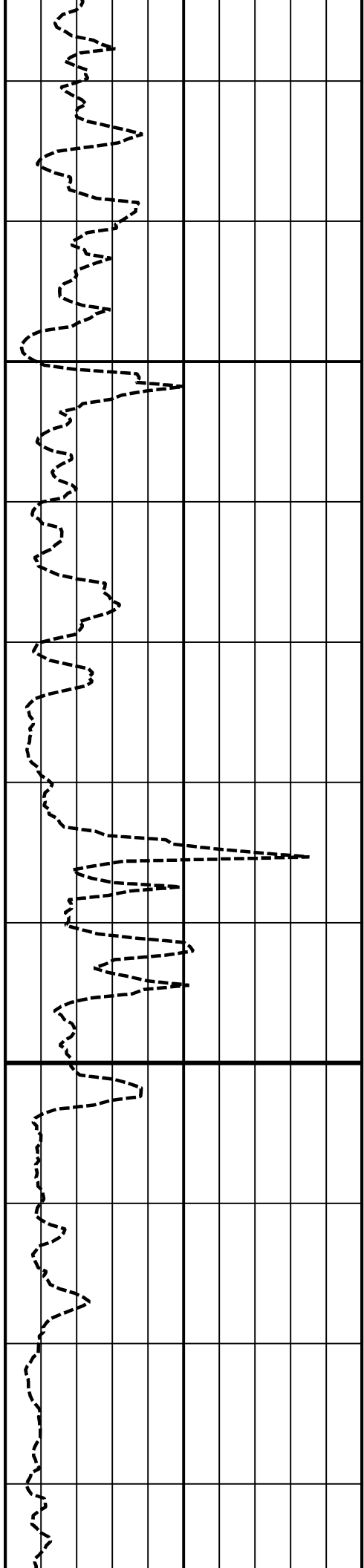
2450

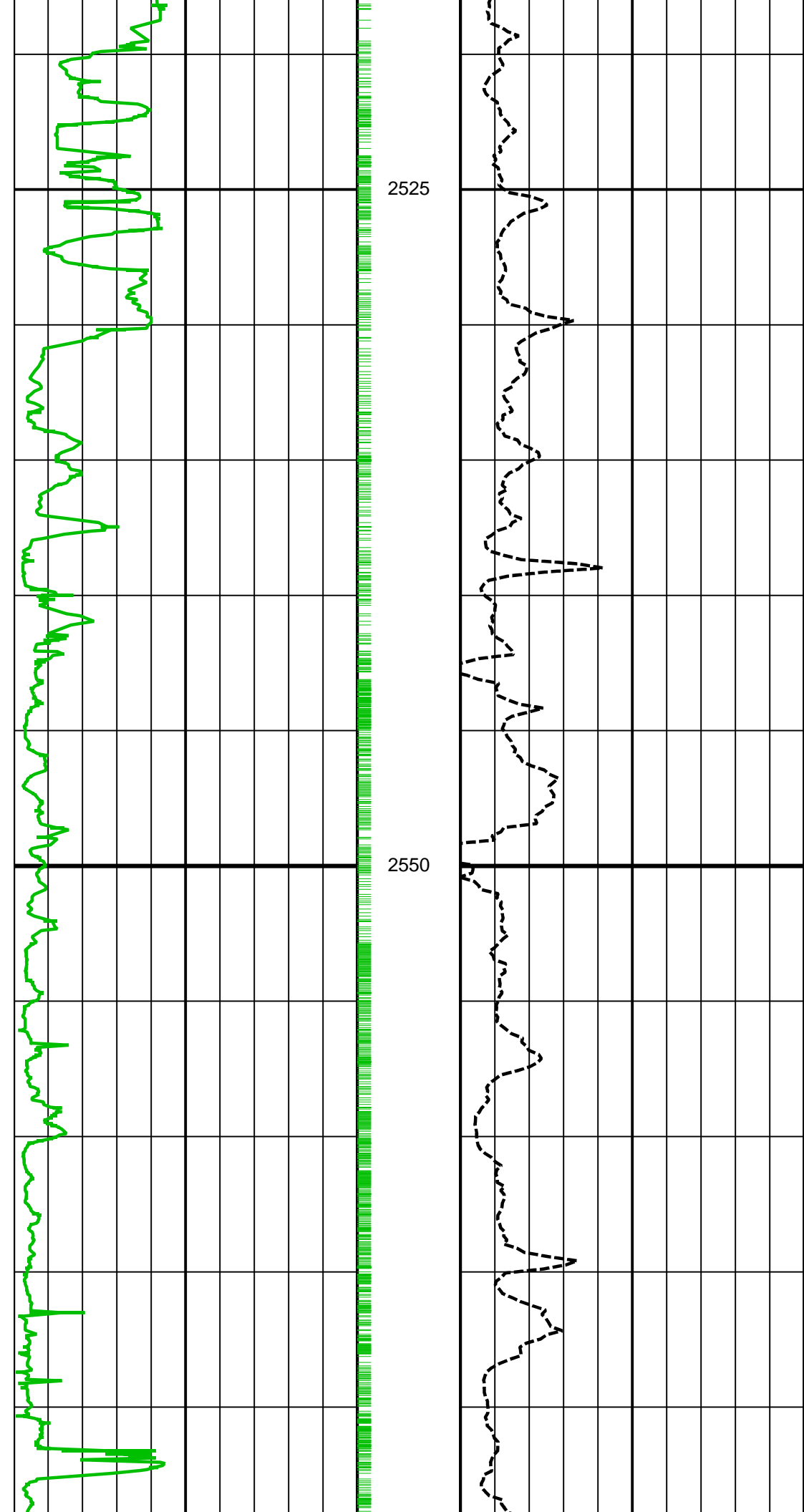


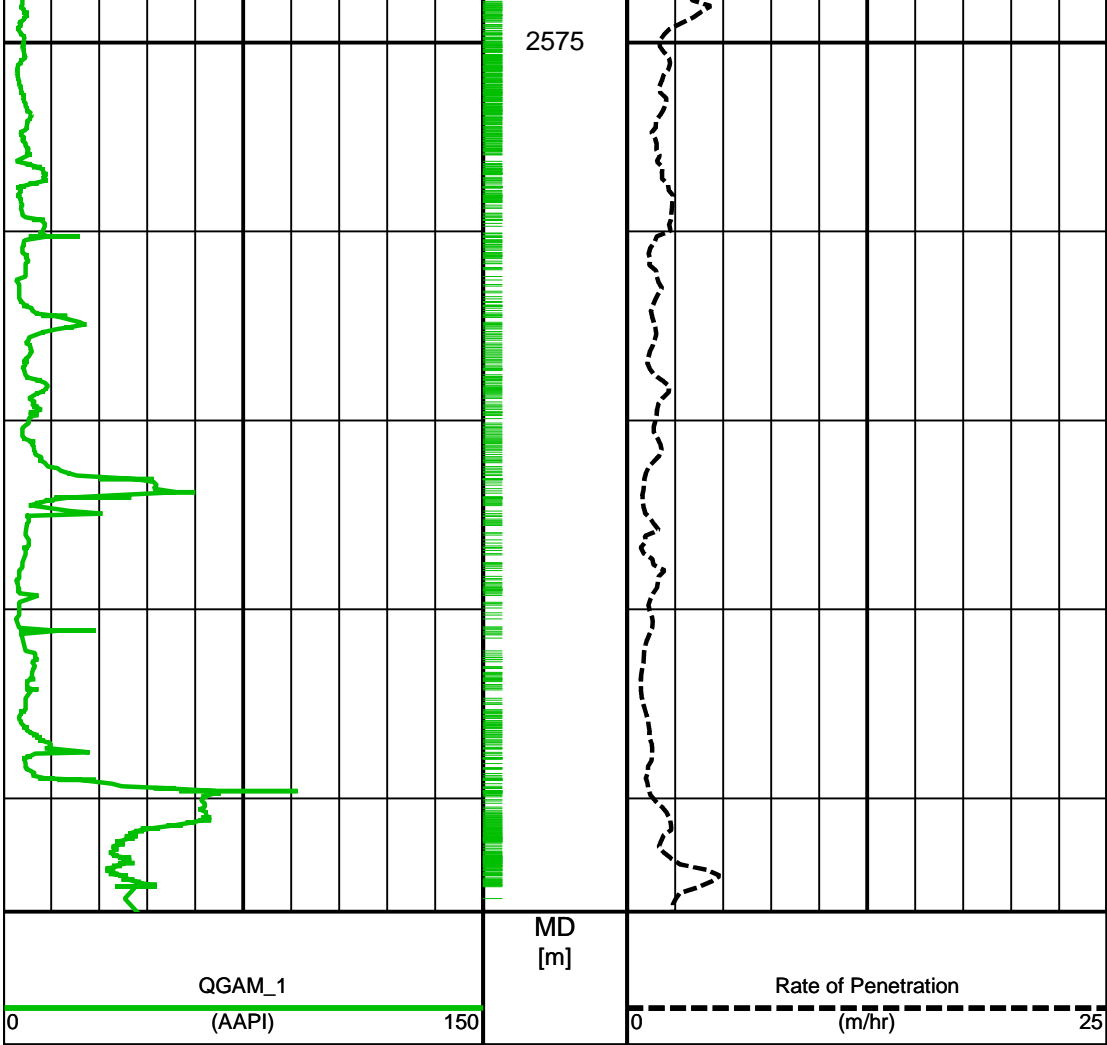


2475

2500







# 1:200 (meters) (MD)



COMPANY: Well Engineering Partners  
 WELL: HON-GT-01-S2  
 FIELD: Honselersdijk Geothermie  
 COUNTRY: Netherlands  
 STATE: \_\_\_\_\_